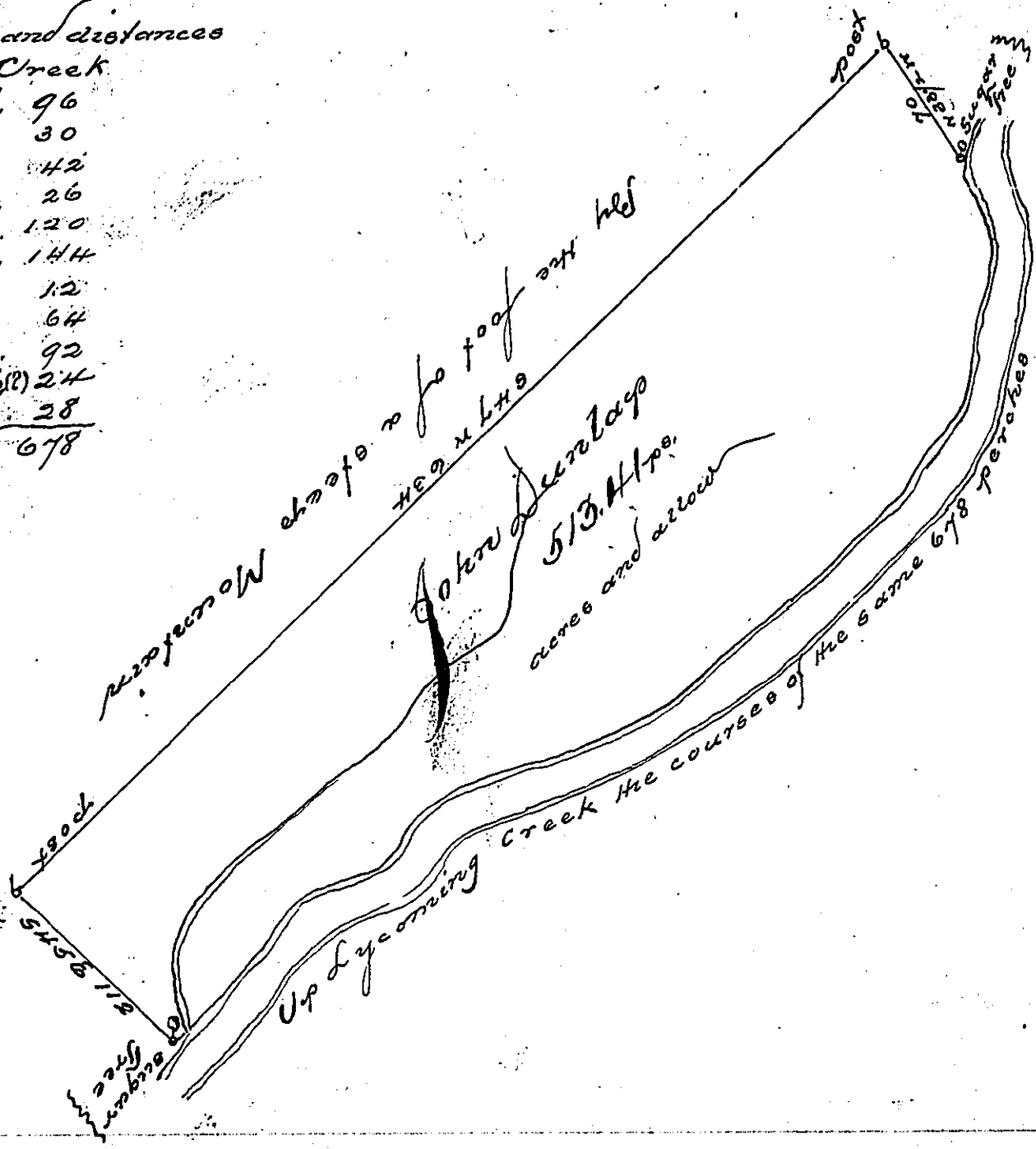


Courses and distances
up the Creek

N. 40. E.	96
N. 72. E.	30
N. 55. E.	42
N. 38. E.	26
N. 70. E.	120
N. 51. E.	144
N. 28. E.	12
N. 43. E.	64
N. 14. E.	92
N. 35. E. (?)	24
North	28
<hr/>	
	678



The Draught of a Tract of Land called Hammit's Improvement situated on the North West side of Lycoming Creek, in the County of Northumberland Containing Five hundred thirteen and a half perches with usual allowance for Roads. Survey'd the 25th day of April Anno Dom. 1788, in pursuance of a warrant to John Dunlap bearing date at Philadelphia the 17th day of May Anno Dom. 1785. N^o 448.

J. Wm. Macray

To John Lukens Esq^r
S. G. of Pennsylvania



IN TESTIMONY that the above is a copy of the original remaining on file in the Department of Internal Affairs of Pennsylvania, made conformably to an Act of Assembly approved the 16th day of February, 1833, I have hereunto set my Hand and caused the Seal of said Department to be affixed at Harrisburg, this Seventh day of February, 1899.

James W. Latta
Secretary of Internal Affairs.